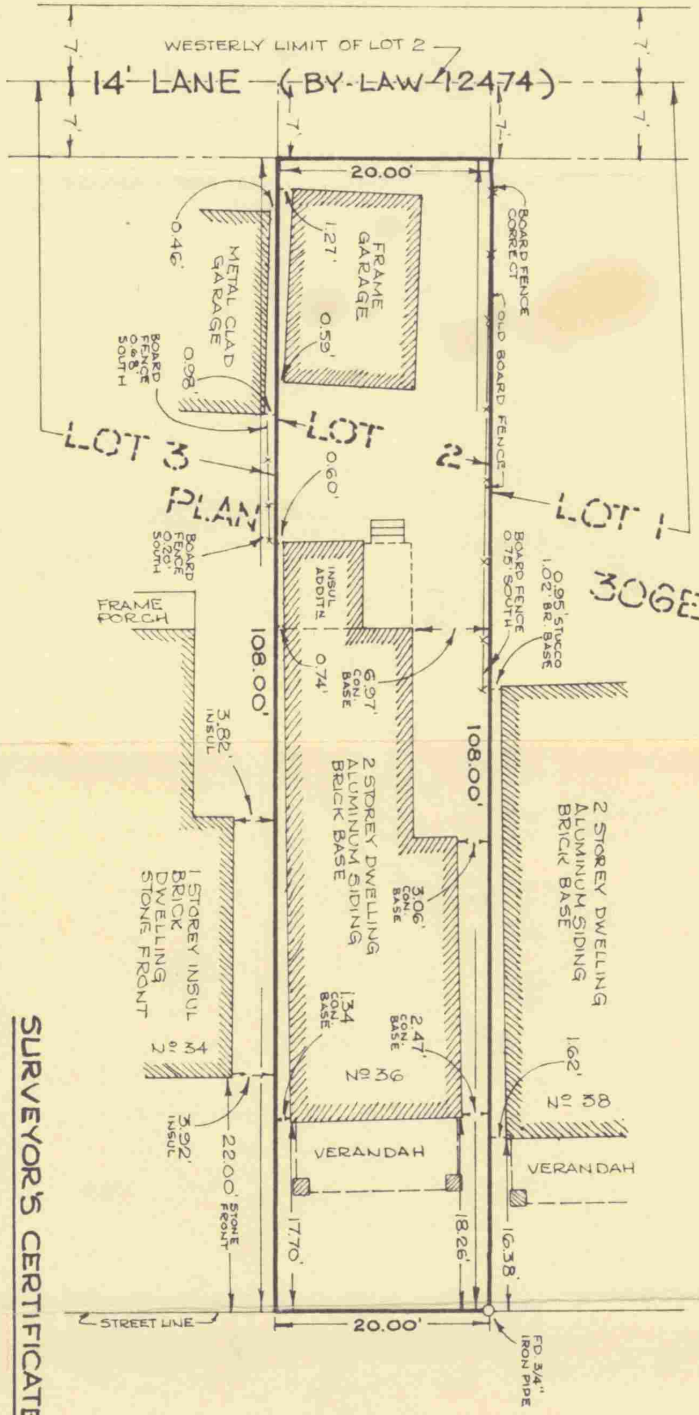


PLAN OF SURVEY OF PART OF  
**LOT 2, REGD PLAN 306E**  
 CITY OF TORONTO  
 MUNICIPALITY OF METROPOLITAN TORONTO

SCALE: 1" = 15'



REGD

**SURVEYOR'S CERTIFICATE**

I HEREBY CERTIFY THAT:

1. THIS SURVEY AND PLAN ARE CORRECT AND IN ACCORDANCE WITH THE SURVEY ACT AND THE REGULATIONS MADE THERE UNDER;
2. THE SURVEY WAS COMPLETED ON THE 11<sup>TH</sup> DAY OF SEPTEMBER, 1974.

SEPTEMBER 11, 1974  
 DATED



GOUGE AVENUE

C. A. RASHID  
 BARRISTER & SOLICITOR  
 719 GONGE STREET  
 SUITE 202  
 TORONTO, ONTARIO,  
 M4W 1A8

D. H. BLACK LIMITED  
 ONTARIO LAND SURVEYOR  
 310 PAINTED POST DRIVE,  
 SCARBOROUGH, ONTARIO.

